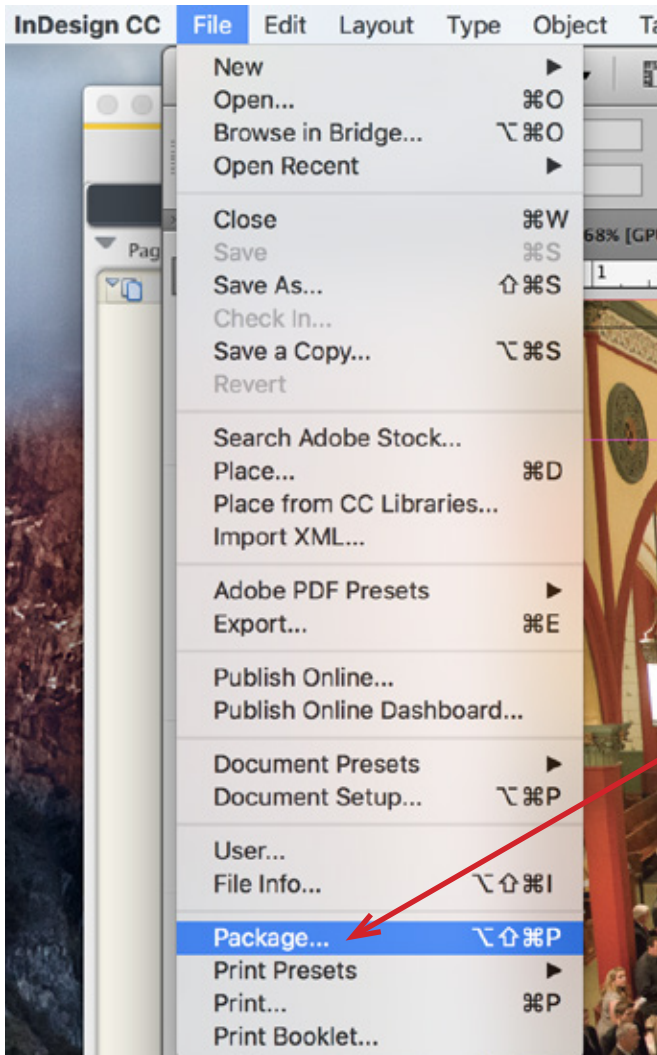
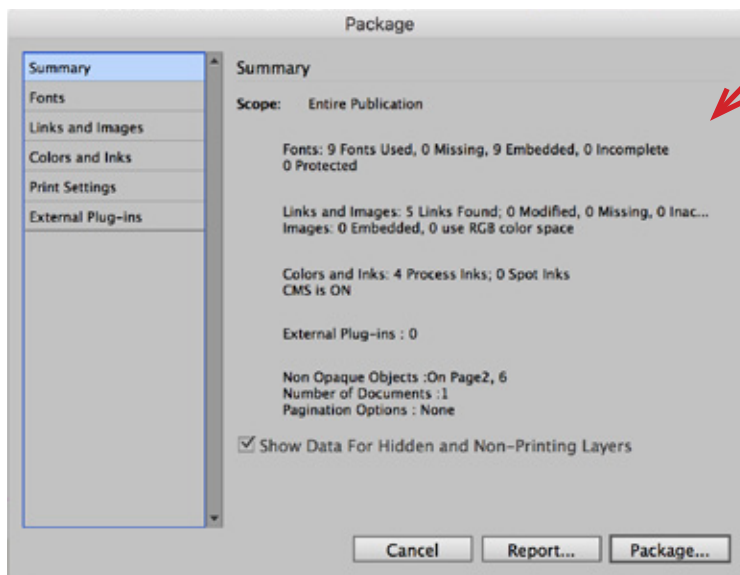


Packaging an Indesign File for High Resolution Printing

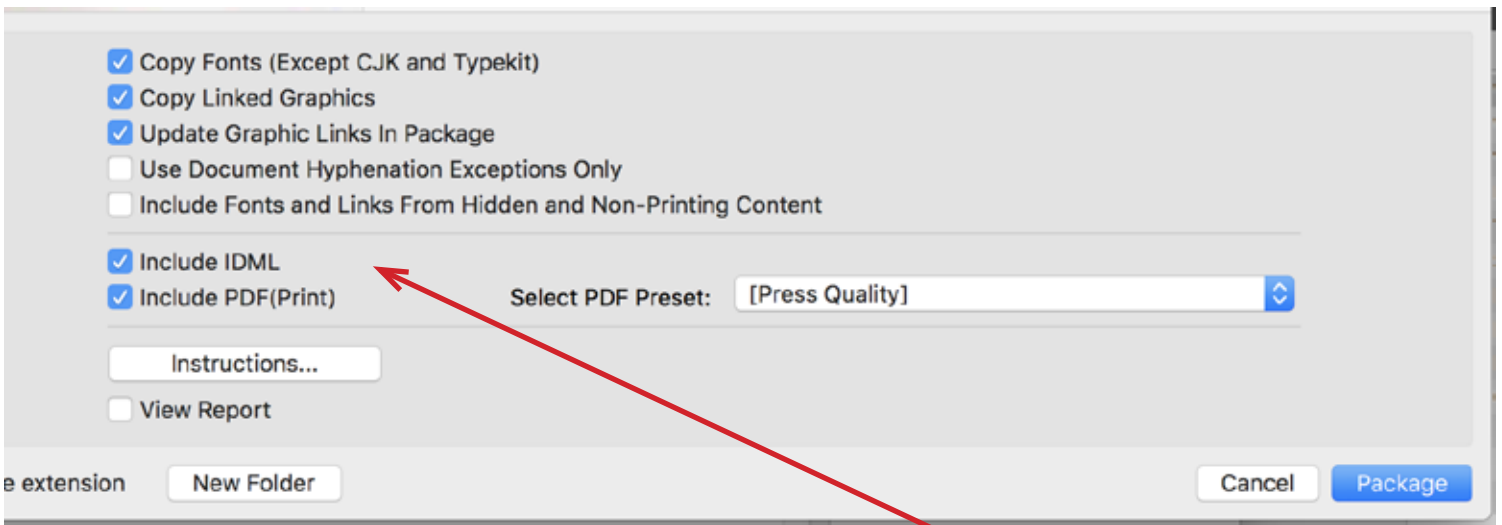


To submit an Indesign file for high-resolution offset printing, please use the following guidelines. This ensures that we receive all of the proper files to produce a high resolution, quality job.

Save the file first.
Then select **File**.
In the drop down menu select **Package**.



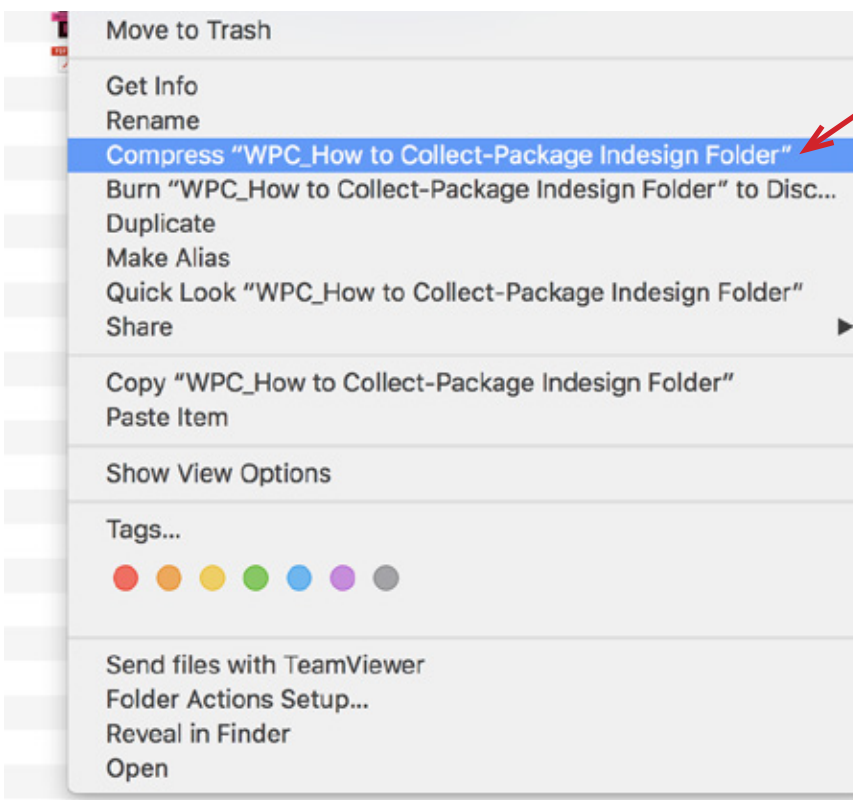
When the screen shown below pops up, make certain that you have **NO MISSING OR MODIFIED LINKS** and **NO MISSING FONTS**.



On this screen, make certain that these boxes are checked. We don't actually need to have an IDML file because we run the latest Adobe Creative Suite software, but it's always a good idea to include it just in case it's needed.

Packaging your Indesign file collects all of the fonts, links, and original native files into one folder. This ensures that we receive all of the files needed to process your job. It's also a good idea to do this before making your own archive.

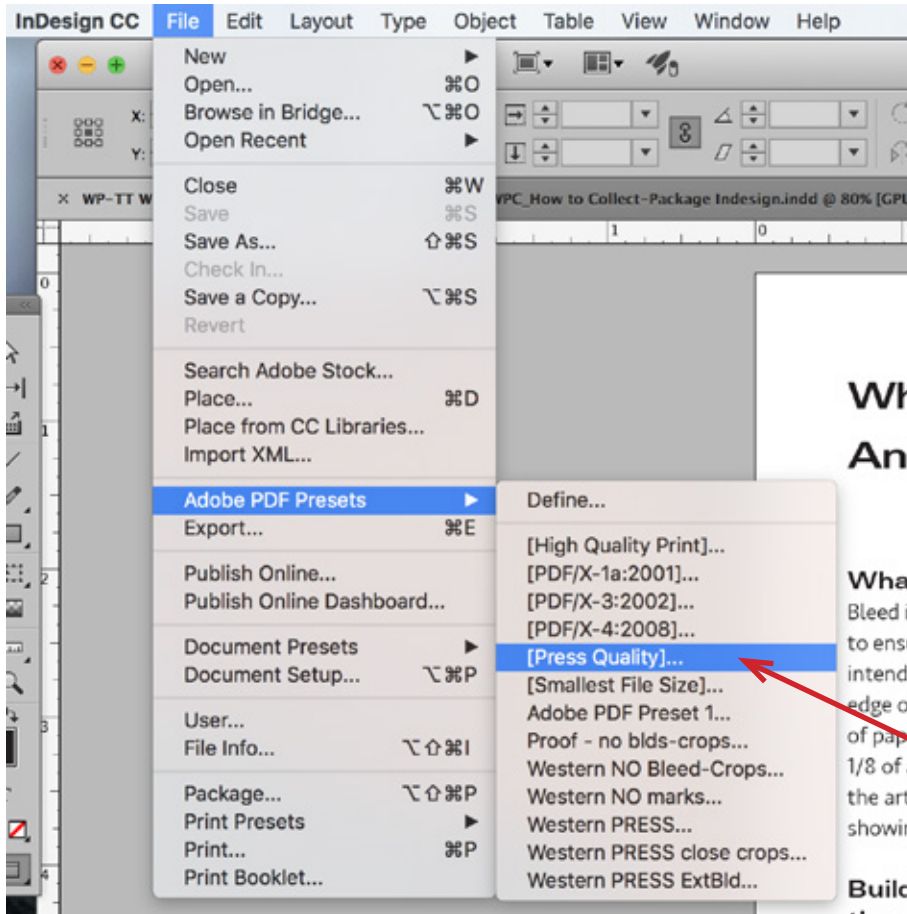
See Next Page for High Resolution PDF specifications.



Find the folder that you collected and select Compress {folder name}

If you are writing to a CD, DVD, or Flashdrive, your files will not need to be compressed. However, if you are emailing or uploading through the internet or an ftp, it's always a good idea to compress your folder before doing so. This ensures that any Type 1 fonts reserve their integrity and will be usable after transfer.

Producing a High Resolution PDF for Offset Printing



To produce a high resolution PDF suitable for offset printing, please use the following guidelines.

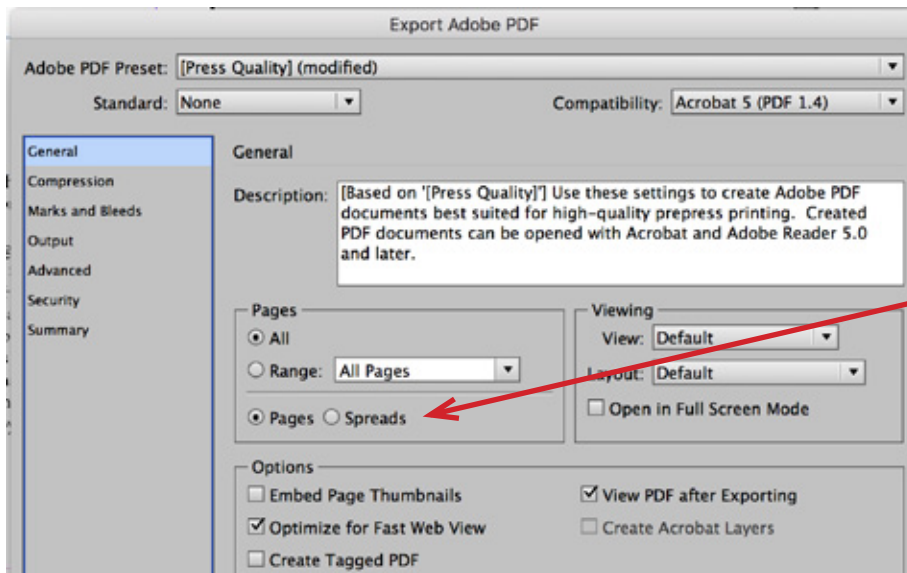
All of your images should be at least 300 dpi at the size they are used.

Colors that are to print as 4 color process should be set to CMYK.

Colors that are to print as a PMS (Pantone) should be set to SPOT.

You can check your color separations by viewing the Separations **Output under Window > Output > Separations Preview**

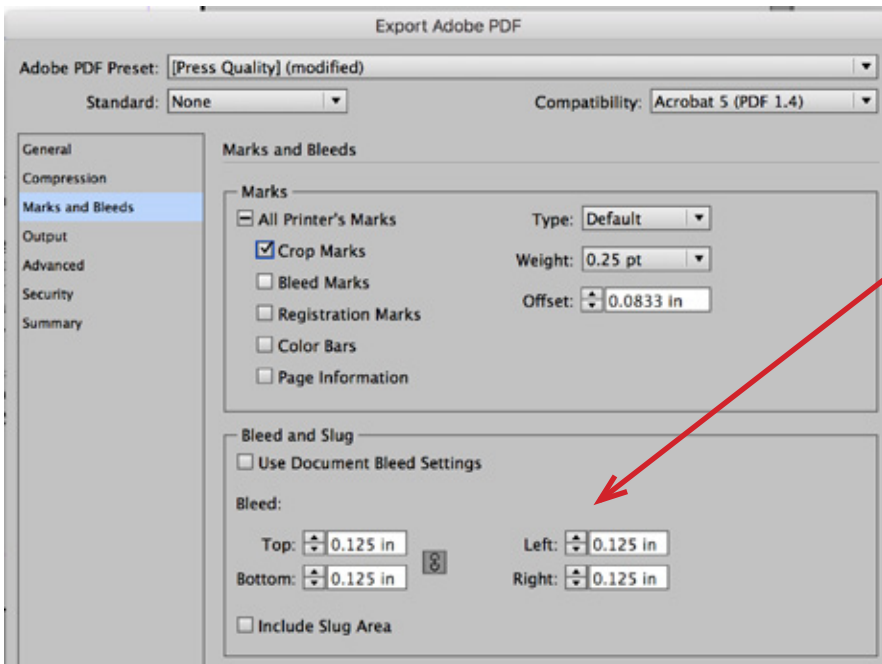
Under **File>Adobe PDF Presets** start with **Press Quality**.



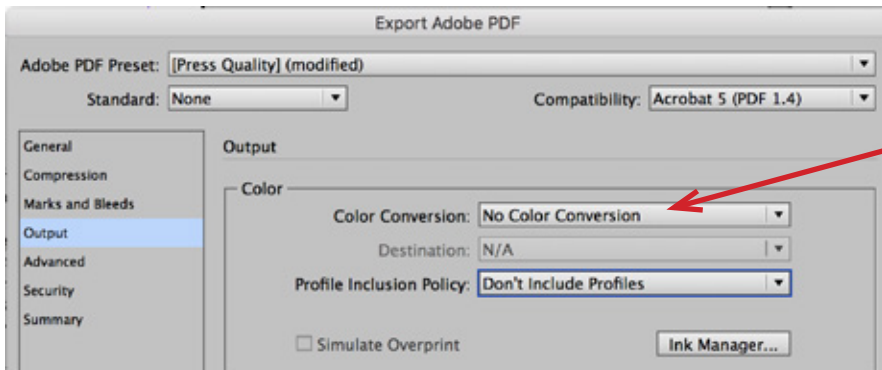
Under the **General** screen, select the pages you want to print or select **All**.

DO NOT SELECT SPREADS. All pages to be printed should be submitted as single pages.

Compression can be left at default.



Under the Marks and Bleeds screen, select Crop Marks and set the amount of Bleed to .125" on all sides.



Under the Output screen, select **No Color Conversion**. Color Conversions are set up in our RIP especially for our different presses. If you require specific color setup or profiles, please consult with your CSR or our production manager.



You can now select **Export**. at the bottom of the screen. Give your PDF a name and email or upload to Western Printing.

If you want to save these specific settings for future use, select **Save Preset** in the bottom left corner of the screen. On the next screen you will be able to give these exports settings a name, such as **Western PDF**. That way, any time you select the **PDF Output Presets** this option will appear

For more information, visit our website at www.westernprintingcoinc.com

Western Printing | *The Best Printers for the Job*
5129 South 95th East Avenue | Tulsa, Oklahoma 74145
p 918.665.2874 | email info@westernprintingcoinc.com